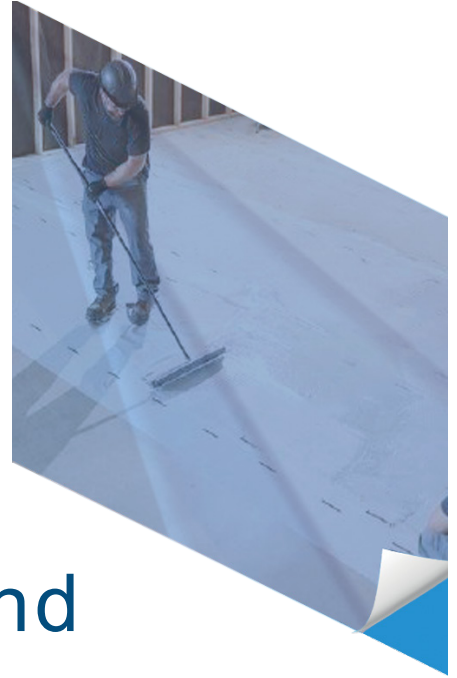


Technical --- Data Sheet

Protectapeel FloorDefend



DO NOT APPLY TO
BROOM FINISH OR ROUGH CONCRETE
TOPICAL SEALERS
GUARDS
EPOXIES
PAINTS
COLOURANTS
OTHER TOPICAL FINISHES
ACRYLIC BASED CURE AND SEALS.

PRODUCT DESCRIPTION

Protectapeel Floordefend is a breathable, composite floor protection system that bonds temporarily to most floors. This seamless, UV and weather-resistant covering is purpose-built to protect most floors through every stage of construction for 24 months. **DO NOT USE ON ACRYLIC SURFACES.**

IMPORTANT: Ensure FloorDefend is suitable for the surface onto which it will be applied by testing to specific jobsite conditions.

CAUTION: DO NOT install over sealer, cure and seal or other topical coatings with the exception of dissipating resin cures.

LIST OF MATERIALS



Fabric Roll

Roll Size: 165cm (W) x 952cm (L)
Total Coverage Area: 185 m²/roll



Adhesive

Volume: 20kg
Total Coverage Area: 35m²/tub



Low Nap Roller

Foam or soft rubber floor squeegee
or low nap roller



Paddle Mixer & Drill



Cutting Tool

Razor knife, box cutter, scissors or
similar cutting tool.

FAST APPLICATION

DURABLE PROTECTION

PPE

We recommend the following PPE when applying Protectapeel FloorDefend



PACKAGING SPECIFICATION

Protectapeel FloorDefend is sold as standard in 20 kilo containers, theoretically covering 2m² per kilo.

STORAGE

Store at temperatures between 5°C - 25°C. DO NOT ALLOW PRODUCT TO FREEZE

SHELF LIFE

Shelf life is 24 months.

PRODUCT SPECIFICATIONS

Maximum level of VOC released over 100 days = 69.33 g/L.

Average daily VOC evaporation rate 0.69 g/l.*

*Average VOC release rate calculated over 100 days. Negligible/ undetectable levels of VOC released after 100 days. Calculated on product stored at 20°C with minimal air movement.

EASY REMOVAL

RESOURCES SAVED

FLAMMABILITY

Protectapeel FloorDefend is non-toxic and non-flammable in the wet state. The dry film waste may be disposed of as low hazard. Refer to the Safety Data Sheet (SDS).

PRE-APPLICATION

Always apply Protectapeel to a small test area first to confirm the substrate's suitability. Ensure all substrates are included in the test, making sure the product is applied at the correct minimum wet film thickness, using the gauge provided. Allow the product to dry for 48 hours, then check that Protectapeel peels away cleanly from each surface.



APPLICATION



PREPARE

1. Ensure concrete has cured a minimum of 10 days and is free from standing water and debris. If slab is exposed and rain or other saturation is expected within 24 hours do not apply.
2. Apply FloorDefend to concrete surfaces that are hard trowel finished, or polished or densified only. **DO NOT** apply to broom finish or rough concrete surfaces. **DO NOT** apply over topical sealers, guards, epoxies, paints, colourants or other topical finishes without thorough testing. **DO NOT** apply over acrylic based cure and seals. Although FloorDefend can protect many surfaces without damage to coatings, it was designed and approved for uncoated smooth concrete surfaces **ONLY**.
3. Ensure concrete surface is between 5-37°C
4. Caution: 1kg or PLC concrete mix designs tend to be more porous in nature and may negatively affect the removal of FloorDefend from the concrete surface. Additional steps are required. Contact our sales team before using FloorDefend with this type of concrete.

FAST APPLICATION

DURABLE PROTECTION



MIX

1. Thoroughly mix each bucket of FloorDefend.
2. FloorDefend is shipped as a concentrate and should be diluted to ensure proper coverage rates and product performance.
3. Add up to 1kg of clean water to every 20 kg container of adhesive mix thoroughly with a mechanical mixer such as drill and paddle mixer.



ROLL OUT

1. To start, roll out the FloorDefend fabric.
2. FloorDefend will not stain the concrete. However, because FloorDefend can affect evaporation, sun, elements, and general exposure, these differences can result in colour variation from the protected and exposed concrete surface. To reduce the risk of visible lines when FloorDefend is removed, it is **IMPORTANT** to apply it along a natural termination point such as walls, control joints or changes from polished concrete to another flooring type where any difference in concrete colour will not be easily noticed.



APPLY ADHESIVE

1. Pour approximately 4kg of FloorDefend directly on top of the fabric.
2. Work in manageable areas to ensure the adhesive remains fluid and easy to apply. Do not pour out more adhesive than can be quickly spread. Over application of adhesive will yield lower coverage rates. Keep buckets closed when not in use to prevent the adhesive from skimming over.



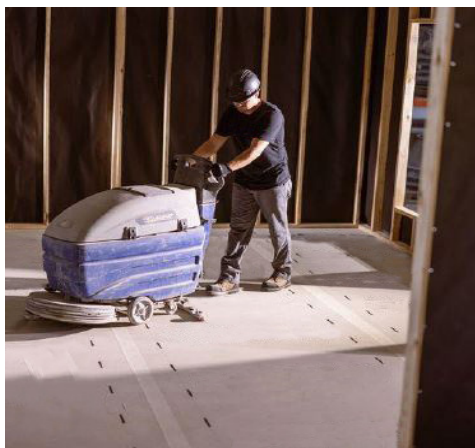
EVEN APPLICATION & CLEAN UP

1. Spread the adhesive evenly using a squeegee or low nap roller, with the correct adhesive dilution as outline above. NOTE: In most cases a low nap roller will yield the highest coverage rate allowing the adhesive to be spread more evenly.
2. Inspect to ensure even coverage and that ALL fabric is fully covered and encapsulated with adhesive.
3. Clean application tools using warm soapy water avoiding washout in drains, waterways or on top of finished surfaces.



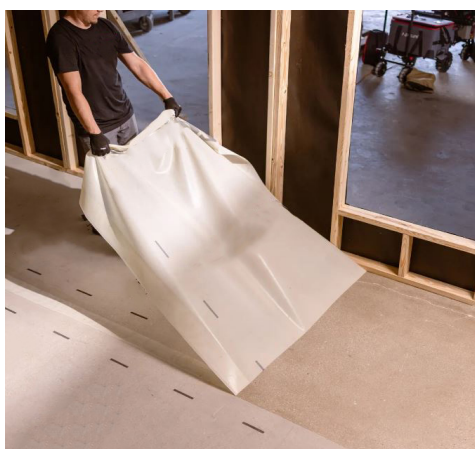
UNDERLAP METHOD

1. Run a wet edge up to the dotted line on the roll that is being installed for the length of the working area to be installed.
2. Fold the fabric edge back on itself.
3. Roll out a section of the next row and underlap this row under the flipped back portion of the proceeding row creating an approx. 3" underlap.
4. Apply the adhesive bonding the two rows together creating a seamless lap.
5. NOTE: We have found this technique greatly increases installation production rates. The underlap method also reduces the chance of double applying adhesive along the seams. A double application of adhesive (i.e. where twice as much adhesive is applied along the seam vs the rest of the fabric), may result in lap lines and should be avoided.



CONSTRUCTION & MAINTENANCE

1. Once FloorDefend has been installed and allowed to cure fully for 24 hours proceed with construction and allow both machine and foot traffic.
2. Inspect FloorDefend for any rips, tears or jeopardised areas. To repair, simply apply glue over any small rips and tears to spot treat. It may be necessary to apply a patch of the new FloorDefend over large rips or tears using the same application methods as above.



REMOVAL

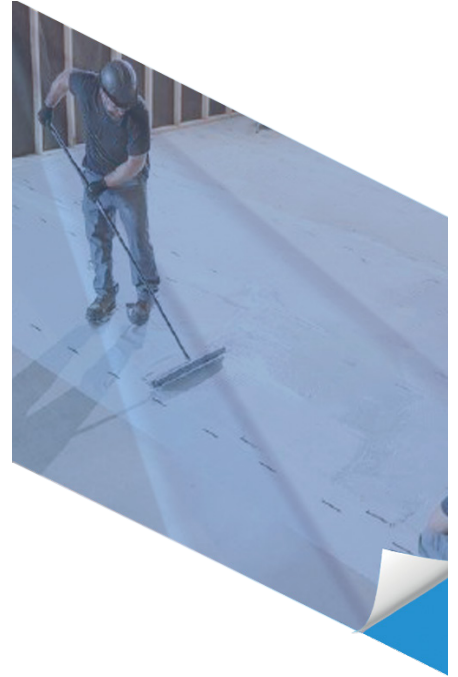
1. To remove FloorDefend start by cutting the textile fabric away from under walls, cabinets or other coverings.
2. Proceed to remove FloorDefend by simply peeling back to remove. Starting in a corner, peel back the covering at a 45 degree angle.
3. FloorDefend is recyclable, please contact Spraylat to arrange collection of your FloorDefend for recycling.
4. Once FloorDefend is removed, you may proceed with applications of stains, dyes, guards, sealers etc. Prior to application of topical products ensure FloorDefend is removed completely. Best practice is to wet clean once removed.



Do's & Don'ts

- ✓ Always do a test patch
- ✓ Use correct PPE
- ✓ Mix before use
- ✓ Store in a cool/dry place
- ✓ Mask all areas you do not want protected
- ✓ Always seal the tub when not in use
- ✗ Do not allow product to freeze
- ✗ Do not apply in rainfall
- ✗ Do not consume or get in eyes
- ✗ Do not mix with other products

More Information —
Get In Touch



ENQUIRIES@SPRAYLAT.CO.UK

+44(0)1536 408 409

WWW.PROTECTAPEEL.COM