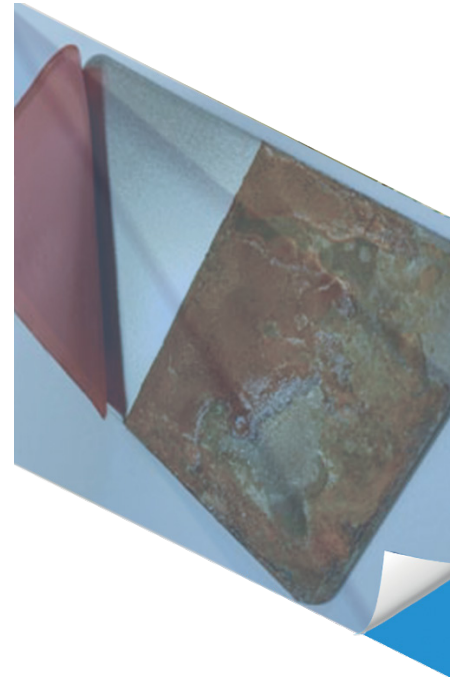


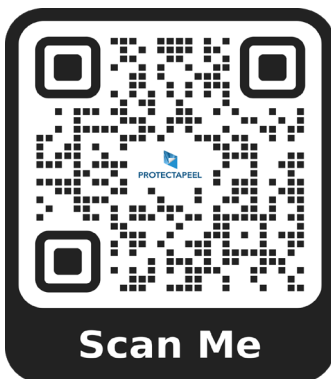
Technical

Data Sheet

Protectapeel Anti-Rust



Apply At 250 Microns



PLEASE SCAN FOR CORRECT APPLICATION

PRODUCT DESCRIPTION

Protectapeel Anti-Rust is a temporary peelable protective coating designed to protect mild steel and stainless steel from damage caused by; flash rusting, abrasion, staining, spillage, weathering and scratching. The liquid applied coating dries to form a tough waterproof film that will protect metal surfaces. **DO NOT USE ON ACRYLIC SURFACES OR GLASS.**

	12 Months External Exposure	24 Months External Exposure
For smooth metal	250 Microns WFT [100 Microns dry film thickness (DFT)]	400 Microns WFT [160 Microns dry film thickness (DFT)]
For shot blasted metal	400 Microns WFT [160 Microns dry film thickness (DFT)]	400 Microns WFT [160 Microns dry film thickness (DFT)]

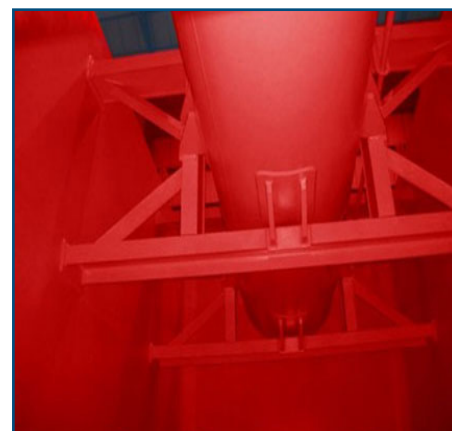
SURFACE COMPATIBILITY

Protectapeel Anti-Rust will protect the following surfaces

Internal	External	Glass	Aluminium	Mild Steel	Acrylic	PVCu	Painted Aluminium	Wood/ Timber	Polished Concrete
✓	✓	✓	✓	✓	✗	✓	✓	✗	✓

PRODUCT ADHESION

Protectapeel Anti-Rust dries to form a tough, air-tight bond with the surface that does not lose adhesion throughout protection.



PRODUCT LIMITATIONS

Protectapeel Anti-Rust has the following limitations:

- ✗ Do not use on wooden window frames or doors
- ✗ Do not apply during rainfall or if rain is expected in the next 24 hours
- ✗ Do not apply if the temperature is below freezing
- ✗ Do not apply if the surface has a temperature of over 40°C

SPRAYLAT CANNOT BE HELD LIABLE FOR DAMAGES ON SURFACES PROTECTED WITH PROTECTAPEEL ANTI-RUST

FAST APPLICATION

DURABLE PROTECTION

PPE

We recommend the following PPE when applying Protectapeel Anti-Rust



PACKAGING SPECIFICATION

Protectapeel Anti-Rust is sold as standard in 15 kilo containers, theoretically covering 2.5m² per kilo, at a wet film thickness of 400 microns.

A standard pallet of Protectapeel Anti-Rust is 44 x 15 kilo containers.

Sizes Available: 15kg, 200kg, 1000kg IBC



APPLICATION TIME

Protectapeel is easily and quickly applied to flat, shaped and curved surfaces, covering approximately 3m² per minute using a Graco 390 airless spray gun.

STORAGE

Store at temperatures between 5°C - 20°C. DO NOT ALLOW PRODUCT TO FREEZE

SHELF LIFE

Shelf life is 24 months.

EASY REMOVAL

RESOURCES SAVED

PRODUCT SPECIFICATIONS

Protectapeel Anti-Rust is red as standard but is also available in clear upon request.

Tensile Strength: >5 MPa

Elongation: >1000%

Adhesion: < 1.0 MPa

Viscosity: 8,000 ± 20,000 cP @ 20°C

Flash Point: N/A

Density: 1.01 kg l⁻¹

Solids Content: 45 ± 2 %

pH: 7-8

Maximum level of VOC released over 11 days = 69.3 g/L.

Average daily VOC evaporation rate 6.30 g/l.*

*Average VOC release rate calculated over 11 days. Negligible/ undetectable levels of VOC released after 11 days. Calculated on product stored at 20°C with minimal air movement.

FLAMMABILITY

Protectapeel Anti-Rust is non-toxic and non-flammable in the wet state. The dry film waste may be disposed of as low hazard. Refer to the Safety Data Sheet (SDS).

PRE-APPLICATION

Always apply Protectapeel to a small test area first to confirm the substrate's suitability. Ensure all substrates are included in the test, making sure the product is applied at the correct minimum wet film thickness, using the gauge provided. Allow the product to dry for 48 hours, then check that Protectapeel peels away cleanly from each surface.



FAST APPLICATION

DURABLE PROTECTION

APPLICATION

Correct application of the first coat in particular is critical as it acts as a barrier to corrosion performance. Refer to Spraylat for application instructions before applying this product and use a wet film gauge to ensure that the minimum wet film thickness is achieved. The contents of the container should be mixed thoroughly before use. **Ensure surface is clean and dry before first coat is applied.** Always conduct a test area and a test peel on each substrate before use.



A minimum wet film thickness (WFT) must be achieved, anything less may result in the product becoming difficult to remove. Do not apply in wet or freezing conditions and protect from rainfall.



The first coat should be applied in temperatures of at least 5°C ensuring complete coverage of substrate with no bubbles or pin holes and to a minimum thickness of at least 250 microns (WFT). If a total coat weight of 400 Microns (WFT) is required then a second coat should be applied, in temperatures of at least 5°C with a minimum of 150 Microns (WFT). Allow the first coat to tack off before applying the second.

CURING TIME

Drying time can be improved by using a combination of heat and moving air, which should not exceed 50°C.



EASY REMOVAL

RESOURCES SAVED

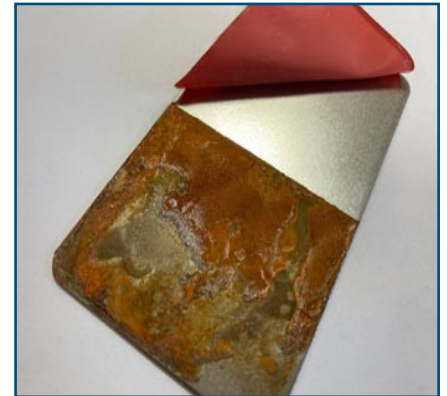
EASE OF REPAIR

If the protective coating rips, repair by lifting the ripped patch and apply a fresh coat to the underside and reseal. Alternatively, cut away the damaged area and apply a fresh coat.



REMOVAL

The dry film can be easily removed by hand peeling. Do not remove in freezing conditions as the coating may be brittle.



CLEANING INSTRUCTIONS

Clean equipment with water immediately after use.



FAST APPLICATION

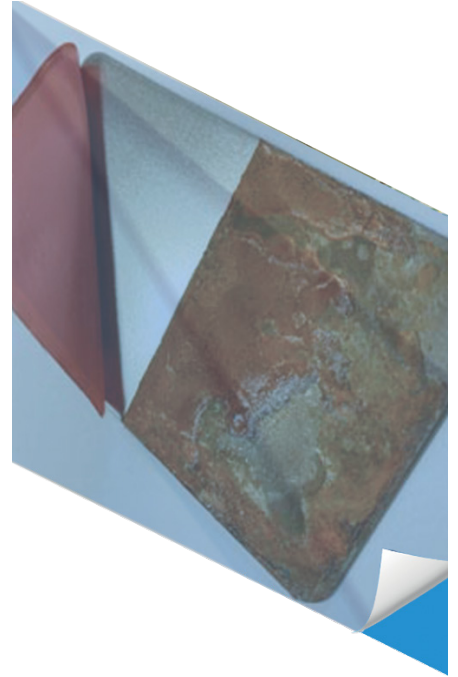
DURABLE PROTECTION



Do's & Don'ts

- ✓ Always do a test patch
- ✓ Use correct PPE
- ✓ Mix before use
- ✓ Use wet film gauge to measure - 250 / 400 Microns
- ✓ Store in a cool/dry place
- ✓ Mask all areas you do not want protected
- ✓ Always seal the tub when not in use
- ✗ Do not allow product to freeze
- ✗ Do not apply in rainfall
- ✗ Do not consume or get in eyes
- ✗ Do not mix with other products
- ✗ Do not apply to porous surfaces

More Information —
Get In Touch



ENQUIRIES@SPRAYLAT.CO.UK

+44(0)1536 408 409

WWW.PROTECTAPEEL.COM