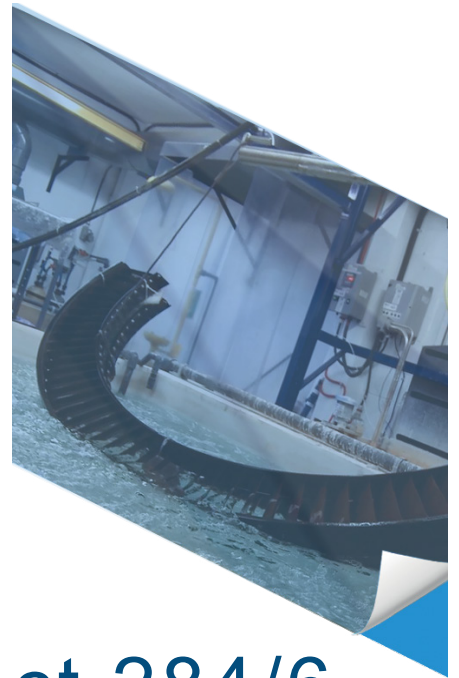


Technical 

---

# Data Sheet

Protectapeel Etch Protect 284/6



Apply At 600 Microns

## PRODUCT DESCRIPTION

Protectapeel Etch Protect 284/6 is a solvent based, one-pack, temporary peelable coating used as a maskant for the chemical treatment of metals such as: anodising, plating, etching and chemical cutting. Etch Protect 284/6 has excellent resistance to acid during treatments such as chemical etching, milling and pickling.

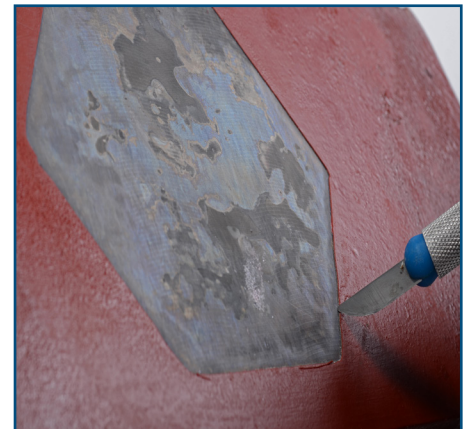
Applied by roller or dip coating at a minimum of 600 microns wet.

## SURFACE COMPATIBILITY

Protectapeel Etch Protect 284/6 is compatible with most metal surfaces.

## PRODUCT ADHESION

Protectapeel Etch Protect 284/6 dries to form a tough, air tight bond that does not lose adhesion or lift during chemical processing.



## PPE

We recommend the following PPE when applying Protectapeel Etch Protect 284/6



## STORAGE

Store at temperatures between 5°C - 25°C. DO NOT ALLOW LIQUID TO FREEZE. Once opened, replace the lid securely. When re-opened for the second time or more, remove any skin and stir the contents thoroughly before using.

## SHELF LIFE

Shelf life is 24 months.

**FAST APPLICATION**

**DURABLE PROTECTION**

## PACKAGING SPECIFICATION

Protectapeel Etch Protect 284/6 is sold as standard in 5 kilo and 25 kilo containers, theoretically covering 2m<sup>2</sup> per kilo, at a wet film thickness of 600 microns.

Sizes Available: 200kg, 1000kg IBC



## PRODUCT SPECIFICATIONS

Protectapeel Etch Protect 284/6 is red in colour.

**Tensile Strength: >5 MPa**

**Elongation: >1500%**

**Adhesion: < 2.0 MPa**

**Viscosity: 3,250 ± 250 cP @ 20°C**

**Flash Point: 0°C**

**Density: 0.953 kg l<sup>-1</sup>**

**Solids Content: 34 ± 2.5 %**

**pH: 7-8**

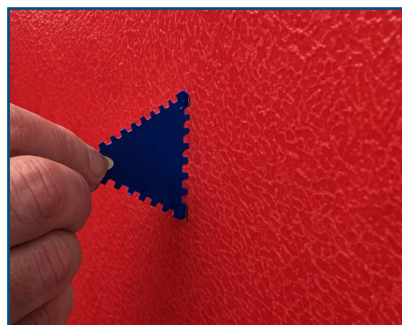
**Maximum VOC: 635 gl<sup>-1</sup>**

## FLAMMABILITY

Care should be taken when handling this product as it is highly flammable. Refer to the safety data sheet (SDS).

## PRE-APPLICATION

Always apply Protectapeel to a small test area first to confirm the substrate's suitability. Ensure all substrates are included in the test, making sure the product is applied at the correct minimum wet film thickness, using the gauge provided. Allow the product to dry for 48 hours, then check that Protectapeel peels away cleanly from each surface.



**EASY REMOVAL**

**RESOURCES SAVED**

## APPLICATION

For detailed instructions please contact Spraylat International Limited. The contents of the container should be mixed thoroughly before use.

A minimum wet film thickness (WFT) of 600 Microns [200 Microns dry film thickness (DFT)] must be achieved, anything less may result in the product becoming difficult to remove.

By Spray – Apply with airless spray gun, using a 17 thou tip size and a box coat to achieve a minimum WFT of 600 Microns (200 Microns DFT).

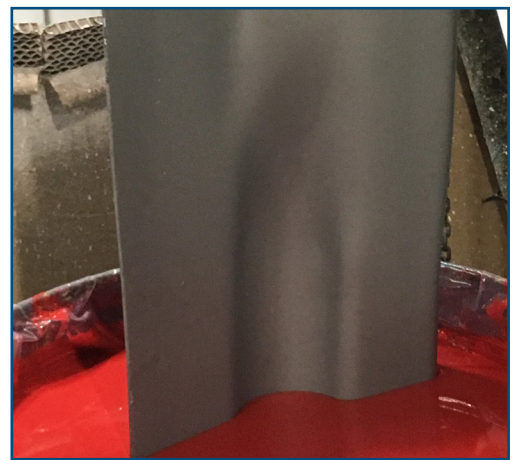
By Roller - Apply 2 coats, allowing 1st to tack off. Apply generously to achieve a minimum wet film thickness (WFT) of 600 Microns (200 Microns DFT)

By Dip - Standard dipping procedures apply. The recommended WFT is between 600 Microns and 750 Microns.

A minimum wet film thickness (WFT) must be achieved, anything less may result in the product becoming difficult to remove. Do not apply in wet or freezing conditions and protect from rainfall.

## CURING TIME

A WFT of 600 microns will be tack free in approximately 20 minutes at room temperature.

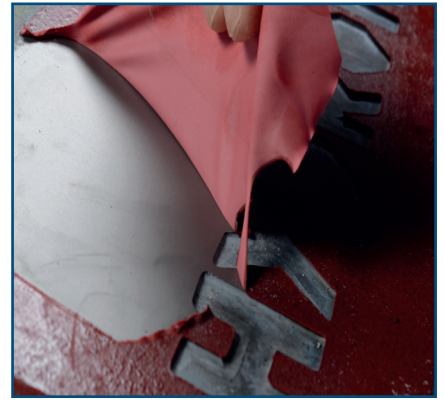


**FAST APPLICATION**

**DURABLE PROTECTION**

## REMOVAL

The dry film can be easily removed by hand peeling. Do not remove in freezing conditions as the coating may be brittle.



## CLEANING INSTRUCTIONS

Clean equipment with water immediately after use.





# Do's & Don'ts

- ✓ Always do a test patch
- ✓ Use correct PPE
- ✓ Mix before use
- ✓ Use wet film gauge to measure - 600 Microns
- ✓ Store in a cool/dry place
- ✓ Mask all areas you do not want protected
- ✓ Always seal the tub when not in use
- ✗ Do not allow product to freeze
- ✗ Do not apply in rainfall
- ✗ Do not consume or get in eyes
- ✗ Do not mix with other products
- ✗ Do not apply to porous surfaces

More Information —  
**Get In Touch**



[ENQUIRIES@SPRAYLAT.CO.UK](mailto:ENQUIRIES@SPRAYLAT.CO.UK)

+44(0)1536 408 409

[WWW.PROTECTAPEEL.COM](http://WWW.PROTECTAPEEL.COM)