

Technical 

---

# Data Sheet

## Protectapeel Passivhaus



Apply At 250 Microns

## PRODUCT DESCRIPTION

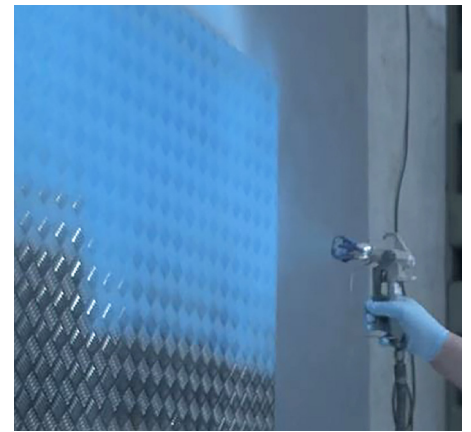
Protectapeel Passivhaus is a water based low VOC protective coating. Applied quickly by spray, it forms a tough, breathable barrier across a building interior, preventing moisture ingress and minimising heat loss.

## SURFACE COMPATIBILITY

Protectapeel Passivhaus can be applied directly to any surfaces within a building. Including masonry and blockwork walls, concrete floors, structural junctions and corners, window and door reveals.

## PRODUCT ADHESION

Protectapeel Passivhaus dries to form a tough, air tight bond that does not lose adhesion during protection.



## PPE

We recommend the following PPE when applying Protectapeel Passivhaus



EYE PROTECTION



GLOVES

**FAST APPLICATION**

**DURABLE PROTECTION**

## PACKAGING SPECIFICATION

Protectapeel Passivhaus is sold as standard in 15 kilo containers, theoretically covering 5m<sup>2</sup> per kilo, at a wet film thickness of 250 microns.

A standard pallet of Protectapeel Passivhaus is 44 x 15 kilo containers.

Sizes Available: 15kg, 200kg, 1000kg IBC



## APPLICATION TIME

Protectapeel is easily and quickly applied to flat, shaped and curved surfaces, covering approximately 3m<sup>2</sup> per minute using a Graco 390 airless spray gun.

## STORAGE

Store at temperatures between 5°C - 25°C. DO NOT ALLOW PRODUCT TO FREEZE

## SHELF LIFE

Shelf life is 24 months.

## PRODUCT SPECIFICATIONS

Protectapeel Passivhaus is blue as standard but is also available in clear or a pigmented colour upon request.

**Tensile Strength: >5 MPa**

**Elongation: >1000%**

**Adhesion: < 1.0 MPa**

**Viscosity: 18,000 ± 2,000 cP @ 20°C**

**Flash Point: N/A**

**Density: 1.09 kg/l<sup>-1</sup>**

**Solids Content: 45 ± 2 %**

**pH: 7-8**

Maximum level of VOC released over 11 days = 53.22 g/L.

Average daily VOC evaporation rate 4.84 g/l.\*

\*Average VOC release rate calculated over 11 days. Negligible/ undetectable levels of VOC released after 11 days. Calculated on product stored at 20°C with minimal air movement.

**EASY REMOVAL**

**RESOURCES SAVED**

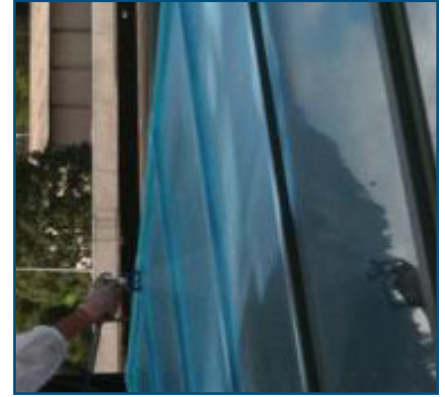
## FLAMMABILITY

Protectapeel Passivhaus is non-toxic and non-flammable in the wet state. The dry film waste may be disposed of as low hazard. Refer to the Safety Data Sheet (SDS).

## APPLICATION

Protectapeel is applied using an airless spray gun (such as a Graco 390) using a 17 thou tip size. ALWAYS STIR THE PRODUCT BEFORE USE.

When you're ready, start by spraying in a horizontal motion, keeping your wrist straight and releasing the trigger at the end of each pass. Once you've covered the surface, switch to a vertical spray to create a nice even "box coat" effect. Keep a steady, consistent speed as you go for the best finish.



## CURING TIME

A WFT of 250 Microns will be tack free in approximately 120 minutes at room temperature. Force drying may be used by using moving air and increasing the surface temperature to a maximum of 50°C.



## CLEANING INSTRUCTIONS

Clean equipment with water immediately after use.



**FAST APPLICATION**

**DURABLE PROTECTION**



# Do's & Don'ts

- ✓ Use correct PPE
- ✓ Mix before use
- ✓ Use the correct tip size
- ✓ Store in a cool/dry place
- ✓ Use wet film gauge to measure - 250 Microns
- ✓ Mask all areas you do not want protected
- ✓ Always seal the tub when not in use
- ✗ Do not allow product to freeze
- ✗ Do not apply in rainfall
- ✗ Do not consume or get in eyes
- ✗ Do not mix with other products

More Information —  
**Get In Touch**



[ENQUIRIES@SPRAYLAT.CO.UK](mailto:ENQUIRIES@SPRAYLAT.CO.UK)

+44(0)1536 408 409

[WWW.PROTECTAPEEL.COM](http://WWW.PROTECTAPEEL.COM)